

## Section I: General Information

Project Title Watershed Restoration Plan Implementation, Education and Outreach

### Project Sponsor Information

Sponsor Name Bitter Root Water Forum Tax Identification # 43-2000515

County Ravalli Website www.brwaterforum.org DUNS # 148485423

Primary Contact Heather Mullee

Signatory Dave Schultz

Title Executive Director

Title BRWF Board President

Address PO Box 1247

Address PO Box 1247

City Hamilton State Montana Zip Code 59840

City Hamilton State Montana Zip Code 59840

Phone Number 406-375-2272

Phone Number 406-375-2272

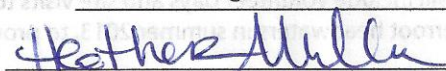
Fax Number n/a

Fax Number n/a

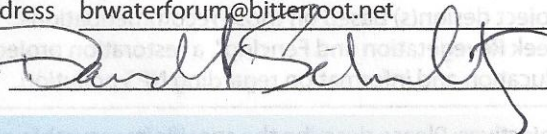
E-mail Address brwaterforum@bitterroot.net

E-mail Address brwaterforum@bitterroot.net

Signature



Signature



### Project Location

Statewide ☐ If project is not statewide please complete the rest of this section.

How is project related to a TMDL? Develops a TMDL Implementation Plan

Watershed Name or HUC # Bitterroot Headwaters

TMDL Planning Area

Bitterroot Headwaters

Project 1 Name Cameron Creek Latitude (1) 45.85 Longitude (1) -113.97

Project 2 Name Hughes Creek Latitude (2) 45.63 Longitude (2) -114.17

Project 3 Name Meadow Creek Latitude (3) 45.82 Longitude (3) -113.81

Project 4 Name Overwhich Creek Latitude (4) 45.66 Longitude (4) -114.18

Project 5 Name Latitude (5) Longitude (5)

### Nonpoint Source (NPS) Information

319 Project Category Watershed Restoration

Waterbody Type

River/Stream

Functional Category Riparian Projects

Is waterbody on the 2010 Impaired Waters List? Yes

1st Pollution Category Agriculture (Grazing Related Sources) Percent of Total (%) 30

2nd Pollution Category Hydromodification (Removal of Riparian Vegetation) Percent of Total (%) 30

3rd Pollution Category Hydromodification (Channel Erosion/Incision) Percent of Total (%) 20

4th Pollution Category Silviculture (Road Construction/Maintenance) Percent of Total (%) 20

### Project Funding

319 Funds Requested

Does the project sponsor have any open 319 contracts?

#### Matching Funds

State Match

State In-Kind Match

Local Funds

Other Match

Total Matching Funds

Other Federal Funds

Total Project Budget

Advance Requested\*  Administrative Fee

*\*Advances require additional justification and DEQ approval.*

Project Title

DEQ Contract Number

319 Award

Projected Closing Date

Project Title

DEQ Contract Number

319 Award

Projected Closing Date

### Project Description

Methods: Please describe the specific activities of this project.

BRWF will work with the ad-hoc Watershed Restoration Plan (WRP) Development Committee to choose project area(s) ripe for design and implementation from the recently completed WRP. BRWF will then contract with a local ecological restoration company to prepare project design(s) based on those recommendations. Additional project activities will include volunteer days and site visits to "Cameron Creek Revegetation and Fencing", a restoration project to be completed in the Bitterroot headwaters in summer 2013, to provide education and information regarding NPS pollution.

Objectives: Please describe the specific/measurable objectives that will ensure the achievement of the project goal(s).

Specific and measurable objectives include, 1) the development of no less than two designs for watershed restoration projects based on recommendations and findings from our newly developed WRP, ensuring rapid progress towards reaching the WRP's 5 year goals, 2) a minimum of two volunteer days to assist with project implementation on restoration sites in the headwaters to give citizens hands-on experience enacting real and positive solutions to local NPS pollution issues, 3) a minimum of one site visit to inform local citizens, Conservation District supervisors, and other interested stakeholders about NPS pollution issues, potential solutions and opportunities available to address impairments on the local level.

Overview: Please provide a brief summary of the proposed project.

Because BRWF wants to make immediate and tangible progress on our WRP and continue to build momentum to address NPS pollution in the Bitterroot headwaters, the intention of this project is two pronged: 1) to immediately act on recommendations outlined in our WRP so that we do not wait one full year to receive funding and stall progress towards identified goals, 2) to provide information regarding NPS pollution and potential solutions through handouts, presentations, and access to on the ground projects addressing NPS pollution issues through strategic action.

BRWF has been working closely with DEQ to develop long term plans and projects to improve water quality in the headwaters and mainstem of the Bitterroot River. Based on recommendations from DEQ and initial input from community stakeholders, BRWF has determined that emphasis on the headwaters and their tributaries is the most critical and tangible focus area for the coming years. This project is designed to make tangible progress in expedient implementation of recommendations from the WRP. Acting immediately on a design from the recently adopted WRP will allow is to make important progress towards short-term goals, ensuring the development of the plan is constructive and the plan does not get "shelved".

Organizing volunteer days and site visits to a revegetation and fencing project in the headwaters will give people tangible information regarding NPS pollution. Whereas information regarding NPS pollution, specifically TMDLs, is often difficult to understand and seemingly "out of our hands" (source: citizen input), project days and site visits show people that there is something that can be done locally to address these issues. These outreach opportunities will be coupled with information in press releases, newsletters, and emails, to give people a multifaceted look at NPS pollution issues and potential solutions.

## Section II: Background Information

### A: Statement of Need and Intent

In collaboration with the Montana Department of Environmental Quality, BRWF chose to pursue the development of a WRP to strategically address NPS issues in the Bitterroot watershed. Based on TMDLs and the Bitterroot Subbasin Plan for Fish and Wildlife Conservation, enough data exists to begin planning actions to remedy NPS pollution in subwatersheds. The WRP that we are currently developing will give us the foundation to strategically take action to combat these issues. Funding to implement recommendations from this plan will result in immediate and tangible progress towards measurable goals as defined in the WRP. Additionally, providing opportunities for hands-on experience with NPS pollution and solutions through volunteer project days and site visits will help build upon momentum created through watershed restoration planning and project implementation on Cameron Creek. If we can continue to focus time and energy on these projects and plans, we can use this momentum to move more people to act on NPS pollution issues in their backyard.

Through ongoing coordination on our WRP with our contract manager, Laura Anderson--from development goals to timelines and benchmarks--we are on pace to have a completed and approved WRP by July 2013. Since we are working directly with Laura as questions arise and plan to submit draft plans as we move towards completion, our final plan will have preliminary pre-approval from DEQ allowing for a smooth transition from the WRP into design work.

A clear need exists to address temperature and sediment impairments in the headwaters. The Ravalli County Resource Advisory Council recognizes this and approved BRWF's application for "Cameron Creek Revegetation and Fencing to Improve Stream Temperatures" in September 2012. This project will increase the effectiveness of that restoration effort by enhancing the education and outreach components through volunteer work days and site visits to the project area, giving people a firsthand and experiential understanding of ways to address NPS pollution.

### B: Collaborative Effort

Partner	Role
Montana Fish, Wildlife & Parks	Assisting in prioritization of proposed project areas; helping to identify landowners ready to engage in project design.
Bitterroot National Forest	Assisting in prioritization of proposed project areas; providing information on related Forest Service activities which may aid in project selection.
Geum Environmental Consulting	Consultants will help vet potential project areas to determine viability of proposed sites/projects in their ability to achieve sediment and thermal load reductions.
Trout Unlimited	Assisting in prioritization of proposed project areas.

#### *Additional Information (Collaborative Effort)*

The need for prioritization in watershed restoration efforts has been identified by the Bitterroot Conservation Partnership (BCP)\*, a local collaborative dedicated to increasing conservation efforts in the Bitterroot Valley. Members of the BCP will be involved in the development of the WRP and will be reengaged through this project to help choose project area(s) for design and to partake in volunteer project days and site visits, helping BRWF reach a larger community with E&O opportunities through their members/supporters.

\*BCP includes representatives from Audubon, Bitterroot Conservation District, Bitterroot National Forest, Bitter Root Land Trust, Clark Fork Coalition, Five Valleys Land Trust, MT Fish, Wildlife & Parks, Trout Unlimited, and other area groups.



Funding Organization	Award Amount	Project Description	Project Status	Contact Information
Montana Department of Environmental Quality	21,000	Development of a Watershed Restoration Plan. Work with local stakeholders to develop a prioritization process to rank restoration needs in the Bitterroot watershed; gather and analyze existing data regarding NPS pollution in the Bitterroot from TMDLs and the Bitterroot Subbasin Plan; determine NPS management measures needed to achieve reductions	Active; on track to be completed in June 2012	Laura Anderson. 406-444-0549 1520 E. 6th Ave. Helena, MT LAndersen3@mt.gov
Bitterroot National Forest (Ravalli County Resource Advisory Council)	55,750	"Cameron Creek Revegetation and Fencing to Improve Stream Temperatures" Install 11,000 feet of riparian fencing to keep cattle out of the creek; plant 1,500 native shrubs to restore natural state of vegetation; install 955 feet of coir logs to promote establishment of vegetation; install 1,000 live willow cuttings; deposit three large woody debris structures to enhance habitat.	Grant approved; official contract award pending.	Joni Lubke Executive Assistant Bitterroot National Forest 406-363-7182 jmlubke@fs.fed.us
Bitterroot National Forest (Ravalli County Resource Advisory Council)	30,000	"Threemile Creek" is a continuation of two previous RAC projects addressing sedimentation and habitat issues in Threemile Creek. The goal of the project is to improve water quality and riparian and aquatic habitat for aquatic life in Threemile Creek by stabilizing stream morphology, reducing erosion and removing sediment and nutrient sources.	Complete	Matt Gordon Grants and Agreements Bitterroot National Forest 406-363-7140 1801 N. 1st St Hamilton, MT mgordon@fs.fed.us
Montana Department of Environmental Quality	30,000	Identified and designed three streambank stabilization projects to address excess sediment delivery to the East and/or West Forks on private land; conducted East and West Fork Bitterroot River Stream Road Crossing Inventory; received assessment analysis from the Bitterroot National Forest	Complete	Laura Anderson. 406-444-0549 1520 E. 6th Ave. Helena, MT LAndersen3@mt.gov
Montana Department of Environmental Quality	60,000	Formed a Water Quality Implementation Team to identify and prioritize restoration projects; designed restoration projects for the East Fork; hired contractors to conduct low flow nutrient monitoring on tributaries within TMDL planning area; informed the public about the benefits of restoring areas of the Bitterroot headwaters	Complete	Laura Anderson. 406-444-0549 1520 E. 6th Ave. Helena, MT LAndersen3@mt.gov

*Additional Information (Planning and Management)*

BRWF has a strong track record of engaging community stakeholders, and planning and implementing on the ground restoration projects. BRWF will continue to build on past successes and increase its effectiveness by expanding it's Project Committee's membership base, talent pool, and duties.

### Section III: Project Components

**A: Education and Outreach: Please briefly describe the education and outreach component of this proposal and the target audience.**

Education and outreach for this project will include volunteer project days, site visits, informational handouts, community presentations, and more broad efforts including the use of media outlets to help spread information.

Volunteer days will not only assist landowners and ranch managers on Cameron Creek in completing revegetation projects, they will provide a firsthand look at voluntary actions that can improve stream conditions. It is critical to get people engaged in these activities so that solutions seem tangible and people feel that they can make a difference in their watershed. BRWF will reach out to a large audience to garner volunteers, including outreach to member lists from partner organizations, so that we can widely share information regarding NPS pollution. Our target audience of interested volunteers will receive additional and more on-depth information as well as instruction on how to implement BMPs for restoring riparian habitat.

Our site visits will provide similar firsthand experiences of riparian BMPs but will target those who are interested in restoration projects and techniques, including Conservation District supervisors, Realtors, riparian landowners, and local environmental contractors/engineers.

The more broad efforts to include the larger community in watershed health through education will include press releases, newsletter articles, and facebook updates regarding our progress and proposed projects.

**C: Operation and Maintenance**

Based on my understanding of the Operations & Maintenance requirements outlined in 4.1.5 of the FY13 Call for Grant Applications, there is no specific activity related to O&M for this project.

**D: Monitoring: Please briefly describe the monitoring component of this proposal.**

Based on my understanding of the Monitoring requirements outlined in 4.1.3 of the FY13 Call for Grant Applications, there is no specific activity related to Monitoring for this specific project.

We will track and report the amount of volunteers reached during project days and the number of people who take advantage of our site visits so we can determine the effectiveness of our education and outreach activities.

## Section IV: Scope of Work

### Task 1 Title Watershed Restoration Plan Implementation: Project Design

#### Description

With a completed Watershed Restoration Plan (WRP) in place, Contractor will work with ad-hoc WRP Development Committee to decide on several project areas that are ripe for implementation. Selection criteria will be based on landowner interest, and/or potential project areas on Bitterroot National Forest (BNF) land that can be implemented in conjunction with assistance from the BNF. Once landowner participation and/or an agreement with the BNF is reached, Contractor will develop no less than two project designs to address excess sedimentation or thermal loading in streams identified in the WRP. Design work will be contracted to private ecological restoration companies specializing in wetland and riparian restoration.

This task is specifically designed to ensure that momentum created during the development of the WRP is not lost and immediate action is taken towards implementing short-term goals.

#### Deliverables

-No less than two project designs to address sedimentation or thermal loading in areas identified in the recently completed WRP. Funding needs and options will be clearly defined for each project.

#### Task 1 Funding

319 Funds	\$15,500.00
Non-Federal Match	\$3,500.00
Other Federal Funds	\$750.00
Total Cost	\$19,750.00
Is Match Secured?	No

Timeline July 2013-April 2014

Match Source In-kind from local stakeholders from TU, BNF, MT FWP, BRWF

### Task 2 Title Watershed Restoration Plan E&O: Volunteer Days and Public Outreach

#### Description

With a recently completed WRP, BRWF will have the right tool to conduct landowner outreach and education, providing information on issues facing subwatersheds and educating landowners on recommended actions, including riparian fencing and native revegetation, that will benefit and ultimately de-list impaired streams in their backyards. Education and outreach for this project will include volunteer project days and more broad efforts including the use of media outlets to help spread information.

Volunteer days will assist landowners and ranch managers on Cameron Creek in completing revegetation projects and provide a firsthand look at voluntary actions that can improve stream conditions. Volunteers will provide incredibly valuable assistance in willow collection, planting thousands of native plants, and watering. BRWF will reach out to a large audience to garner volunteers, including outreach to member lists from partner organizations, so that we can widely share information regarding NPS pollution. Our target audience of interested volunteers will receive additional and more on-depth information as well as instruction on how to implement BMPs for restoring riparian vegetation.

The more broad efforts to include the larger community in watershed health through education will include press releases, newsletter articles, community presentations, and facebook updates regarding our progress and proposed projects.

#### Deliverables

-Minimum of two volunteer days at "Cameron Creek Revegetation and Fencing to Improve Stream Temperatures" project sites.  
-list of volunteers names and informational handouts given to volunteers will be submitted to DEQ.  
-Copies of press releases, newsletter articles submitted to DEQ.

#### Task 2 Funding

319 Funds	\$1,500.00
Non-Federal Match	\$8,000.00
Other Federal Funds	\$2,500.00
Total Cost	\$12,000.00
Is Match Secured?	Yes

Timeline Summer 2013 and Spring 2014

Match Source MWCC cash match secured, Volunteer time to be secured

## Description

"NPS Pollution Solution" site visits will provide firsthand experiences similar to those on the volunteer project days, including the use of BMPs on restoration projects. The target audience will be more specific for site visits, engaging those who are interested in restoration projects and techniques, including Conservation District supervisors, Realtors, riparian landowners, and local environmental contractors/engineers. Through live instruction and printed handouts, attendees will receive background information on NPS pollution issues in the area, proposed solutions, BMPs for riparian restoration and information on resources for landowners interested in pursuing project development.

## Deliverables

-Minimum of one site visit to project site(s) to demonstrate BMPs for riparian restoration  
 -Copies of press releases, newsletter articles submitted to DEQ.

## Task 3 Funding

319 Funds	\$250.00
Non-Federal Match	\$2,000.00
Other Federal Funds	
Total Cost	\$2,250.00
Is Match Secured?	Yes

Timeline Fall 2013 and Spring 2014

Match Source MWCC match secured, Partner input/assistance to be secured

## Task 4 Title Administration

## Description

Provide contract accounting, record keeping, and administration for all project tasks. Provide status and match reports (upon billing), annual report, and stand alone Final Report.

## Deliverables

-No less than quarterly Status Reports with accompanying requests for reimbursement, and match statements  
 - One Annual Report  
 -One Final Report

## Task 4 Funding

319 Funds	\$1,700.00
Non-Federal Match	\$500.00
Other Federal Funds	
Total Cost	\$2,200.00
Is Match Secured?	Yes

Timeline Ongoing until June 30, 2014

Match Source BRWF board of directors

## Section V: Supporting Documents

### A: Detailed Project Budget

	Cash Match			In-Kind Match				
Task Number and Specific Action	Private	State	Federal	Private	State	Federal	319 Funds	Total Costs
Select project sites with WRP Cmte.				\$750	\$250	\$250	\$500	\$1,750
Develop project designs				\$2,000	\$500	\$500	\$15,000	\$18,000
Volunteer Days at project sites	\$500			\$5,000	\$250	\$2,500	\$500	\$8,750
Site Visits to project sites	\$750			\$1,000	\$250		\$250	\$2,250
Community Presentations				\$500	\$250		\$500	\$1,250
Press Releases, Newsletters				\$500			\$250	\$750
NPS informational handouts	\$250			\$500	\$250		\$250	\$1,250
Reporting to DEQ				\$500			\$1,700	\$2,200
TOTAL	\$1,500			\$10,750	\$1,750	\$3,250	\$18,950	\$36,200



**B: Project Milestone Table:** Please complete the following Project Milestone Table by entering task numbers and titles in the left hand column, then check the box(es) for the appropriate quarter(s) and year(s) in which the task will take place. 10/2/12

Milestone	2QT 2013	3QT 2013	4QT 2013	1QT 2014	2QT 2014	3QT 2014	4QT 2014	1QT 2015	2QT 2015	3QT 2015	4QT 2015	1QT 2016
Task 1: Watershed Restoration Plan Implementation: Project Design	<input type="checkbox"/>	<input checked="" type="checkbox"/>	<input checked="" type="checkbox"/>	<input checked="" type="checkbox"/>	<input type="checkbox"/>	<input type="checkbox"/>	<input type="checkbox"/>	<input type="checkbox"/>	<input type="checkbox"/>	<input type="checkbox"/>	<input type="checkbox"/>	<input type="checkbox"/>
Task 2: Watershed Restoration Plan E&O: Volunteer Days and "NPS Pollution Solution" Site Visits	<input type="checkbox"/>	<input checked="" type="checkbox"/>	<input type="checkbox"/>	<input type="checkbox"/>	<input checked="" type="checkbox"/>	<input type="checkbox"/>	<input type="checkbox"/>	<input type="checkbox"/>	<input type="checkbox"/>	<input type="checkbox"/>	<input type="checkbox"/>	<input type="checkbox"/>
Task 3: "NPS Pollution Solution" Site Visits	<input type="checkbox"/>	<input type="checkbox"/>	<input type="checkbox"/>	<input checked="" type="checkbox"/>	<input checked="" type="checkbox"/>	<input type="checkbox"/>	<input type="checkbox"/>	<input type="checkbox"/>	<input type="checkbox"/>	<input type="checkbox"/>	<input type="checkbox"/>	<input type="checkbox"/>
Task 4: Administration	<input type="checkbox"/>	<input checked="" type="checkbox"/>	<input checked="" type="checkbox"/>	<input checked="" type="checkbox"/>	<input checked="" type="checkbox"/>	<input type="checkbox"/>	<input type="checkbox"/>	<input type="checkbox"/>	<input type="checkbox"/>	<input type="checkbox"/>	<input type="checkbox"/>	<input type="checkbox"/>
	<input type="checkbox"/>	<input type="checkbox"/>	<input type="checkbox"/>	<input type="checkbox"/>	<input type="checkbox"/>	<input type="checkbox"/>	<input type="checkbox"/>	<input type="checkbox"/>	<input type="checkbox"/>	<input type="checkbox"/>	<input type="checkbox"/>	<input type="checkbox"/>
	<input type="checkbox"/>	<input type="checkbox"/>	<input type="checkbox"/>	<input type="checkbox"/>	<input type="checkbox"/>	<input type="checkbox"/>	<input type="checkbox"/>	<input type="checkbox"/>	<input type="checkbox"/>	<input type="checkbox"/>	<input type="checkbox"/>	<input type="checkbox"/>
	<input type="checkbox"/>	<input type="checkbox"/>	<input type="checkbox"/>	<input type="checkbox"/>	<input type="checkbox"/>	<input type="checkbox"/>	<input type="checkbox"/>	<input type="checkbox"/>	<input type="checkbox"/>	<input type="checkbox"/>	<input type="checkbox"/>	<input type="checkbox"/>
	<input type="checkbox"/>	<input type="checkbox"/>	<input type="checkbox"/>	<input type="checkbox"/>	<input type="checkbox"/>	<input type="checkbox"/>	<input type="checkbox"/>	<input type="checkbox"/>	<input type="checkbox"/>	<input type="checkbox"/>	<input type="checkbox"/>	<input type="checkbox"/>
	<input type="checkbox"/>	<input type="checkbox"/>	<input type="checkbox"/>	<input type="checkbox"/>	<input type="checkbox"/>	<input type="checkbox"/>	<input type="checkbox"/>	<input type="checkbox"/>	<input type="checkbox"/>	<input type="checkbox"/>	<input type="checkbox"/>	<input type="checkbox"/>
	<input type="checkbox"/>	<input type="checkbox"/>	<input type="checkbox"/>	<input type="checkbox"/>	<input type="checkbox"/>	<input type="checkbox"/>	<input type="checkbox"/>	<input type="checkbox"/>	<input type="checkbox"/>	<input type="checkbox"/>	<input type="checkbox"/>	<input type="checkbox"/>
	<input type="checkbox"/>	<input type="checkbox"/>	<input type="checkbox"/>	<input type="checkbox"/>	<input type="checkbox"/>	<input type="checkbox"/>	<input type="checkbox"/>	<input type="checkbox"/>	<input type="checkbox"/>	<input type="checkbox"/>	<input type="checkbox"/>	<input type="checkbox"/>
	<input type="checkbox"/>	<input type="checkbox"/>	<input type="checkbox"/>	<input type="checkbox"/>	<input type="checkbox"/>	<input type="checkbox"/>	<input type="checkbox"/>	<input type="checkbox"/>	<input type="checkbox"/>	<input type="checkbox"/>	<input type="checkbox"/>	<input type="checkbox"/>

Please ensure that you submit a project map(s) and letters of support along with this Final Application form. If design drawings are available please provide those as well. For on-the-ground work please include copies of the applicable permits.

☒ **C: Project Map**

☒ **D: Letters of Support**

☐ **E: Design Drawings**

☐ **F: Applicable Permits**

**G: Comments:** Please use the space provided for any additional information that may not have been captured by this application form.

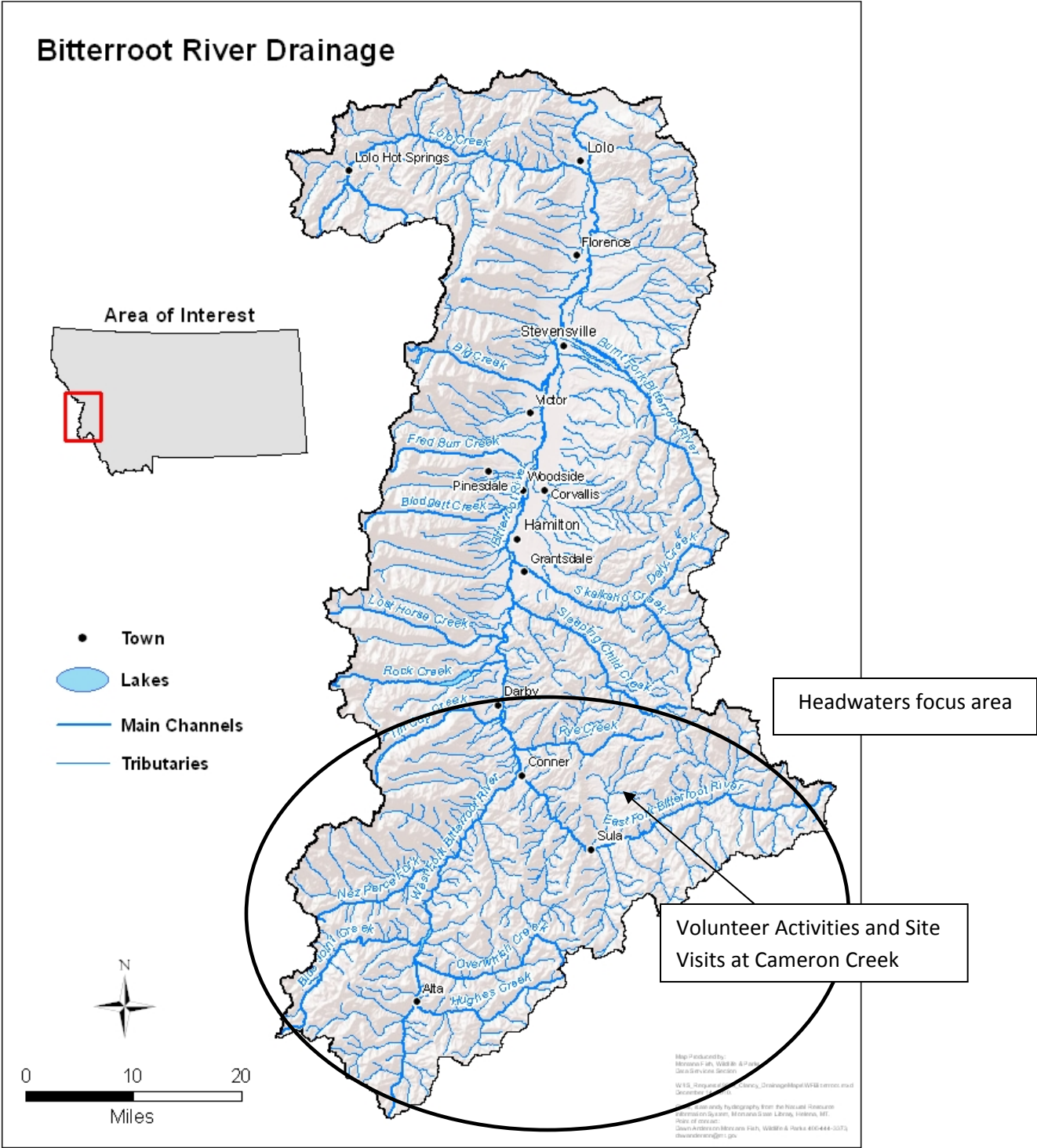
This application was initially submitted to pursue funding for both "Watershed Restoration Planning and Project Design" and "Cameron Creek Revegetation and Fencing". Since the preliminary 319 application was submitted in July, BRWF's "Cameron Creek Revegetation and Fencing" plan was accepted for funding through the Ravalli County Resource Advisory Council (September 2012); we have significantly modified/reduced our grant request to reflect this change.

Project names included in the "Project Location" section were derived from the proposed planning area for our WRP and are for consideration only. Project design locations will be determined based on recommendations made in the completed WRP.

Chris Clancy, Montana Fish, Wildlife & Parks fisheries biologist on the Bitterroot, is also in support of this project. Because he is on the board of BRWF, we included a letter of support from Leslie Nyce of FWP to avoid a potential conflict of interest.

BRWF “Watershed Restoration Plan Implementation, Education and Outreach”

Bitterroot headwaters: Anticipated area for project design (specific location to be determined based on recommendations made in the completed WRP)



Proposed Project Area for Watershed Restoration Plan Implementation



United States  
Department of  
Agriculture

Forest  
Service

West Fork Ranger  
District

6735 West Fork Rd.  
Darby, MT 59829  
406-821-3269

---

File Code: 2670

Date: September 27, 2012

Route To:

Subject: Letter of Support for Bitter Root Water Forum

To: Robert Ray  
Montana Department of Environmental Quality  
1520 E. Sixth Avenue  
PO Box 200901  
Helena, MT 59620

Dear Robert

This letter is in support of the Bitter Root Water Forum's (BRWF) proposal for "Watershed Restoration Plan Implementation, Education, and Outreach". As a group that works in the Bitterroot watershed, the fisheries program on the Bitterroot National Forest strongly supports the implementation of a plan designed to strategically address restoration measures across ownership boundaries in the Bitterroot River and its tributaries. The Forest fisheries project is always looking for partners such as BRWF to help improve the fishery and water quality in the drainage.

Furthermore, BRWF has invited the Bitterroot National Forest to take part in the development of the Watershed Restoration Plan (WRP), and we trust that promptly pursuing designs based on recommendations from this plan will help compliment our ongoing efforts for watershed restoration and protection.

The Forest fisheries program knows that building upon existing momentum is helpful in achieving short-term goals as outlined in the WRP. We support BRWF's interest in acting immediately upon completion of the WRP to ensure that recommendations from the plan are completed in a timely manner.

Thank you for your consideration.

Sincerely,

***Michael Jakober***

Michael Jakober  
Bitterroot National Forest south zone fisheries biologist





Robert Ray  
Montana Department of Environmental Quality  
1520 E. Sixth Avenue  
PO Box 200901  
Helena, MT 59620

28 September 2012

Dear Robert,

This letter is in support of the Bitter Root Water Forum's (BRWF) proposal for "Watershed Restoration Plan Implementation, Education, and Outreach". As a group that works in the Bitterroot watershed, Montana Fish, Wildlife & Parks, strongly supports the implementation of a plan designed to strategically address restoration measures in the Bitterroot drainage.

Furthermore, BRWF has invited Montana Fish, Wildlife & Parks to take part in the development of the Watershed Restoration Plan (WRP), and we trust that promptly pursuing designs based on recommendations from this plan will help compliment our ongoing efforts for watershed restoration and protection.

The East Fork Bitterroot River, its headwaters and tributaries provide critical habitat for westslope cutthroat trout and bull trout, two native trout species. Watershed restoration and protection is necessary for the long term survival of these species.

Montana Fish, Wildlife & Parks knows that building upon existing momentum is helpful in achieving short-term goals as outlined in the WRP. We support BRWF's interest in acting immediately upon completion of the WRP to ensure that recommendations from the plan are completed in a timely manner.

Thank you for your consideration.

Sincerely,

*Leslie G. Nyce*

Leslie G. Nyce  
Conservation Technician  
Montana Fish, Wildlife & Parks



Rob Roberts  
Trout Unlimited  
Clark Fork Restoration Director

Robert Ray  
Montana DEQ  
1520 E. Sixth Avenue  
P.O. Box 200901  
Helena, MT 59620-0901

September 25, 2012

Dear Robert:

Please accept this letter as Trout Unlimited's endorsement of the 319 grant proposal submitted by the Bitterroot Water Forum. The Bitterroot Water Forum spearheaded and is in the process of completing a Watershed Restoration Plan for the East Fork of the Bitterroot River. This grant will help the Bitterroot Water Forum build on momentum generated through the WRP development and ensure that landowners, community groups and partnering agencies are able to continue to build and act upon a common vision for the watershed.

The Bitterroot Water Forum and Trout Unlimited, along with numerous other partners, are part of the Bitterroot Conservation Partnership. To date, this broad-based group has been involved in road decommissioning, revegetation, conservation easements, riparian fencing and other water quality improvement projects. This grant will allow the Bitterroot Water Forum to complete the Cameron Creek project and further WRP planning and design, while helping the Bitterroot Conservation partnership to move closer to achieving the ambitious five year goals developed during the WRP process.

Trout Unlimited has dedicated staff time and financial resources to these and other projects in the drainage and looks forward to continued restoration and conservation efforts. We thank you very much for this funding opportunity and your continued work for conserving natural resources. Please do not hesitate to contact me if you have any questions.

Sincerely,

Rob Roberts