



Section 319 Grant - Final Application

Final Applications are due Monday, October 1, 2012

9/30/12

Section I: General Information

Project Title Upper Teton Watershed - Riparian Improvements

Project Sponsor Information

Sponsor Name Teton River Watershed Group (TRWG)

Tax Identification # 81-0523989

County Teton

Website www.tetonriverwatershed.org/

DUNS # 626151992

Primary Contact Alan Rollo

Signatory Sally Heuscher

Title Coordinator

Title President

Address 816 Grizzly Drive

Address 816 Grizzly Drive

City Great Falls State Montana Zip Code 59404

City Great Falls State Montana Zip Code 59404

Phone Number 406-727-4437

Phone Number 406-466-5584

Fax Number 406-727-3741

Fax Number 406-727-3741

E-mail Address arollo7@msn.com

E-mail Address festusch@3rivers.net

Signature 

Signature 

Project Location

Statewide ☐ If project is not statewide please complete the rest of this section.

How is project related to a TMDL? Implementing a TMDL

Watershed Name or HUC # Teton

TMDL Planning Area

Teton Watershed

Project 1 Name riparian #1 - above Choteau

Latitude (1) 47° 48' 33.98" N

Longitude (1) 112° 12' 24.04" W

Project 2 Name riparian #2 - below Choteau

Latitude (2) 47° 51' 22.63" N

Longitude (2) 112° 01' 03.31" W

Project 3 Name riparian #3 - below Choteau

Latitude (3) 47° 53' 33.37" N

Longitude (3) 111° 56' 06.32" W

Project 4 Name

Latitude (4)

Longitude (4)

Project 5 Name

Latitude (5)

Longitude (5)

Nonpoint Source (NPS) Information

319 Project Category Watershed Restoration

Waterbody Type

River/Stream

Functional Category Riparian Projects

Is waterbody on the 2010 Impaired Waters List?

Yes

1st Pollution Category Agriculture (Grazing Related Sources)

Percent of Total (%) 80

2nd Pollution Category Hydromodification (Removal of Riparian Vegetation)

Percent of Total (%) 20

3rd Pollution Category

Percent of Total (%)

4th Pollution Category

Percent of Total (%)

Project Funding

319 Funds Requested

Does the project sponsor have any open 319 contracts?

Matching Funds

State Match

State In-Kind Match

Local Funds

Other Match

Total Matching Funds

Other Federal Funds

Total Project Budget

Advance Requested* Administrative Fee

**Advances require additional justification and DEQ approval.*

Project Title

DEQ Contract Number

319 Award

Projected Closing Date

Project Title

DEQ Contract Number

319 Award

Projected Closing Date

Project Description

Methods: Please describe the specific activities of this project.

The specific activities of this project include 3,600 feet of riparian corridor fencing, three off-stream watering systems, three newsletters to update 3,000 landowners on proactive water quality projects, one watershed tour to demonstrate project results, five producer workshops on livestock/grazing management, one annual meeting reaching 75 landowners to describe these projects, and MSU Extension assistance monitoring nutrients and sediment at five sites to document change.

Objectives: Please describe the specific/measurable objectives that will ensure the achievement of the project goal(s).

The specific project objectives are to 1) increase healthy riparian conditions on three miles of the Teton River and 2) reduce nutrient concentrations in the Teton River. Meeting these objectives will work towards implementing the comprehensive TMDL and watershed plan developed by DEQ and TRWG to meet all beneficial uses of the water in upper Teton River.

Overview: Please provide a brief summary of the proposed project.

Since September 2003, the TRWG has used the state's Teton Water Restoration Plan as a guide to try to bring all impaired waters in the Teton Basin (Teton River, Spring Creek, Deep Creek, Willow Creek, Muddy Creek and Lower Blackleaf Creek) into compliance with water quality standards. The TRWG is now focusing on the Teton River around Choteau with this project application since there is other work currently in-progress on Deep Creek and Spring Creek, which are both tributaries of the Teton River. The tributary known as Muddy Creek has been essentially dry during the past several years therefore not a priority. There is need for more landowner discussion prior to accomplishing any projects on Willow Creek and Lower Blackleaf.

In 1998 the Natural Resource Conservation Service accomplished a Teton River corridor assessment and characterization for the TRWG identifying 67 miles of 184 miles of the Teton River with unhealthy riparian condition. The 2003 Teton River Watershed TMDL identified a target of 147 miles for healthy riparian condition. Since 2003, the TRWG through grants and producer cooperation has improved riparian conditions on 35 miles of the Teton River, leaving 32 miles to work on. Although the on-the-ground project will address only three miles of the remaining 32, these are the worst sites remaining on the Teton River. The educational component of this project will work towards convincing other producers to improve riparian conditions on the remaining impaired miles of the Teton River.

For the on-the-ground projects, the TRWG and three producers will cooperate to install 3,600 feet of riparian fencing and three off-stream watering systems that will be used to manage livestock grazing on three miles of riparian corridor. For the educational components the TRWG will work with MSU Extension and Teton Conservation District to reach out to area landowners through three newsletters, one tour, one annual meeting and five workshops about livestock management practices.

MSU Extension will assist TRWG by monitoring water quality at five sites along the Teton River to document changes. These five sites are above, at, and below Choteau so that the difference between the impacts of these improvements and the town of Choteau is recorded. The five sites will be tested four times per year for two years for nutrients and sediment.

A: Statement of Need and Intent

On the Teton River, three measurable components create nonpoint source pollution per the Teton TMDL and the 1998 aerial assessment: stream alterations, dewatering and unhealthy riparian zones. The pollutants include nutrients and sediment, which impact aquatic life, cold-water fisheries, recreation, industry, and drinking water. The pollutants are primarily a result of degraded riparian health, hydrologic river modification, and dry land and irrigated agricultural practices. This project will continue to pull together the cooperative efforts working together to address the water quality issues in the Teton River Watershed to **implement** the TMDL program and watershed planning, erosion control and education programs. Improved riparian conditions and agriculture practices (BMPs) will be the primary tasks to meet the water quality goals. A monitoring program will continue to ensure progress is made.

Since the 1998 NRCS aerial assessment on the Teton River by NRCS, the TRWG has resolved streambank modification issues at many sites by improving riparian management. The projects have helped improve water quality by reducing sediment and nutrient loads into the Teton River. But there are still approximately 32 miles that need to be addressed to have a truly healthy Teton River riparian corridor. These three projects are within a portion of that 32 miles of the Teton River above and below the town of Choteau listed as impaired by DEQ which has high levels of nutrients and sediment.

This project will address the Teton River pollutants identified in the TMDL and aerial assessment, which include sediment and nutrients. The specific projects will include riparian corridor fencing and revegetation, landowner education on land management Best Management Practices (BMP), and monitoring. These practices will implement and support the Teton TMDL and sections 3, 4 and Appendix 8 of the 2012 Montana Nonpoint Source (NPS) Management Plan. Specifically included from the NPS Management plan are sections: 3.1.1 Agriculture Strategy 3: Facilitate activities to reduce NPS pollution through financial assistance for on-the-ground activities; Section 4 Educational activities to increase awareness and activities to reduce pollution; and Appendix A BMPS including off-stream watering facilities and riparian fencing.

B: Collaborative Effort

Partner	Role
MSU Extension	With TRWG, write a SAP that clearly describes the what, when and who for water quality monitoring as part of this project. Train volunteers how to take samples.
Teton Conservation District	Partner with TRWG to sponsor 5 producer workshops and one tour that will demonstrate cost-effective alternatives for grazing management in riparian areas along the Teton River.
Landowner - New Rockport Colony	Provide the labor to install and maintain 1,200 feet riparian fencing and one off-stream water project
Landowner - Rick Corey	Provide the labor to install and maintain 1,200 feet riparian fencing and one off-stream water project
Landowner - not named here but identified	Provide the labor to install and maintain 1,200 feet riparian fencing and one off-stream water project

Additional Information (Collaborative Effort)

The TRWG was formed in 1994 to address local landowner concerns. The group initially held land-user and focus group meetings and surveys to determine key issues and priorities. Since 1994 the TRWG has successfully completed stream restoration projects, riparian enhancements, educational programs and extensive monitoring. TRWG has been and continues to be a collaborative effort of local, state and federal agencies, groups and landowners. This project will build upon lessons learned from past endeavors, and greatly help improve the health of the Teton River.

Funding Organization	Award Amount	Project Description	Project Status	Contact Information
DEQ	\$71,000	This Deep Creek Phase II project includes riparian corridor fencing, streambank sloping and revegetation, irrigation diversion modification, and Deep Creek landowner education on land management Best Management Practices (BMP).	50% complete	DEQ - Mark Ockey 406-444-5351 mockey@mt.gov
DNRC	\$10,000	This educational watershed project resulted in two tours, two annual meetings, a Teton Watershed web site, new brochure, and an updated display board.	complete	DNRC- Dave Martin 406-444-4253 damartin@mt.gov
DEQ	\$113,650	This Deep Creek Phase I project resulted in a WRP, streambank stabilization at three sites improving health on seven miles of Deep Creek; and BMPs at three sites in Deep Creek area improving 500 acres of vegetation.	complete	DEQ- Mark Ockey 406-444-5351 mockey@mt.gov
SWCDMI	\$2,000	Project was to increase cooperation with local schools to monitor water quality on the Teton River and its tributaries. The funds paid for a YSI water quality meter for volunteer monitoring.	complete	MACD-Jan Fontaine 406-443-5711 mail@macd.org
NFWF	\$25,500	On the upper Teton River this grant helped pay for riparian improvement through installation of one off-site water, ten miles of riparian fencing, and 4,000 feet of stream bank stabilization.	complete	NFWF-Brian Ocepek 303-289-0112

Additional Information (Planning and Management)

The TRWG board of landowners and agencies will review monthly project status to ensure all components of the grant contract are being handled as agreed upon. The majority of these board members have been involved for over 15 years of previous successful Teton watershed projects. Using past experience with similar water quality projects funded by NPS/319 grants, the TRWG has estimated project expenses, and identified in-kind support from a wide range of interests and identified responsible parties.

The TRWG coordinator, who has 20 years of experience with 319 grant on-the-ground projects, will meet frequently with the landowners to track project progress and help with educational events. The TRWG board and coordinator will submit draft grazing contracts to DEQ for review prior to final signatures.

The MSU Extension is very experienced in writing SAPS and training volunteers on water quality monitoring. They will take the lead in making sure all monitoring tasks are successfully accomplished.

The TRWG coordinator has been certified by the Big Sky Public Procurement Association in contract management, accounting, procurement, billing and recordkeeping. The TRWG coordinator has also been certified by the EPA on grants management.

Section III: Project Components

A: Education and Outreach: Please briefly describe the education and outreach component of this proposal and the target audience.

There will be three phases to the education and outreach component of this project titled Upper Teton Watershed - Riparian Improvement. The first phase will be accomplished by on-site inspections before and after each individual project completion with the corresponding partner/landowner. The second phase will be annual workgroup meetings during the winter months with all partners to evaluate progress and direction. The third phase will include the general public and all partners to review the procedures that were successful and what did not work well. The final report will be available on the TRWG web site as a historical document demonstrating the success.

The specific tools to reach landowners for the above education and outreach components include: 1) three newsletters mailed to over 3,000 landowners and interested parties in the Teton Watershed on what is and is not working with riparian projects around Montana; 2) the annual TRWG meeting in Dutton reaching 75 people showing pictures and hearing first-hand comments about successful riparian projects; 3) tour of completed projects to see how these new riparian projects are working, and 4) five grazing management workshops to educate landowners on new technology and procedures that will benefit their operation and the natural resources.

C: Operation and Maintenance

The long-term operations and maintenance of this project will primarily be the responsibility of the landowner. A project contract with the landowner on each project will list obligations of all project participants for the life of the project. The expected lifespan of the fencing and off-stream water projects is 10-years. For project monitoring the TRWG will acquire assistance from the local extension agent to verify successful project installation, followed up with a one year on-site status inspection, and then five year status reviews.

D: Monitoring: Please briefly describe the monitoring component of this proposal.

1. A comprehensive Sampling and Analysis Plan (SAP) will be developed by MSU Extension and TRWG describing the specifics of who, when and what will be accomplished for monitoring associated with this specific project. The SAP will compliment the new TRWG Quality Assurance Project Plan (QAPP) being written right now. Water quality monitoring will include testing nutrients and sediment at five sites four times per year for two years above, at and below Choteau to document change. The results of this monitoring will help TRWG know if the projects are having any immediate change in water quality conditions. This information will then be used to determine the need for a longer term monitoring program and need for additional water quality projects.
2. Data management, compilation, reporting, and monitoring activities will follow requested DEQ format and protocol. All water quality monitoring data collected will be submitted to DEQ using the most current upload process.
3. For each on-the-ground project TRWG will use photo points to document changes at specific project sites in land use, riparian and stream conditions. Data will be used to estimate project success of riparian improvement.
4. Educational and outreach results will be tracked by the number of people attending the training events and the number of landowners that actually use the training tools to change their riparian management practices. Comments from participants will be used to modify future training events.

Section IV: Scope of Work

Task 1 Title Teton River Sampling and Analysis Plan (SAP)

Description

Prior to commencing field work, contractor will develop a Sampling and Analysis Plan (SAP) to guide field activities and monitoring plans outlined in Tasks 2. This plan will be developed jointly by MSU and TRWG and must be approved in writing by the DEQ QA/QC Officer and the DEQ Contract Liaison prior to the commencement of field work and monitoring associated with this project. The SAP will compliment the new TRWG Quality Assurance Project Plan (QAPP). Water quality monitoring will include testing nutrients and sediment at five sites four times per year for two years above, at and below Choteau to document change. 319 grant funds will be used to pay MSU Extension at \$2,000 and TRWG coordinator at \$1,000 to help TRWG write SAP and train volunteers. In-kind support will be TRWG labor to help write SAP.

Deliverables

A completed SAP that ensures consistent and appropriate monitoring is accomplished by the volunteers.

Task 1 Funding

319 Funds	<input type="text" value="\$3,000.00"/>
Non-Federal Match	<input type="text" value="\$3,000.00"/>
Other Federal Funds	<input type="text"/>
Total Cost	<input type="text" value="\$6,000.00"/>
Is Match Secured?	<input type="text" value="Yes"/>

Timeline July - September 2013

Match Source TRWG

Task 2 Title Teton River Project Assessment Monitoring

Description

Monitor water quality using guidelines developed in Task 1- SAP and assess each project listed in Task 3. Volunteers trained by MSU Extension will take nutrients and sediment grab samples at five sites four times per year for two years above, at and below Choteau to document change. Samples will be sent to a certified lab for analysis. Data will be entered into DEQ database and using a trends tracking tool developed by MSU Extension, TRWG will evaluate if riparian projects are meeting their water quality objectives. For each on-the-ground project 'before and after' project photo-points will be used to document changes over time. Photos will then be taken after one year of project installation and at 5-year increments.

319 grant funds include paying for: 1) lab samples at \$10 per Nitrogen, Nitrate + Nitrate; \$10 per Nitrogen, Total Kjeldahl; \$15 per Total Nitrogen; \$10 per Total Phosphorus and \$8 per Suspended Sediment at 5 sites x 4 times per year x 2 years = \$2,120; 2) \$2,000 for MSU Extension to train volunteers and ensure first sampling round is accomplished correctly and 3) \$2,000 for TRWG coordinator time to assist volunteers and enter data into DEQ database. In-kind support will be two volunteers taking samples at 5 sites, 4 times per year over 2 years at \$20 per volunteer \$1,600 labor plus \$1,000 for mileage.

On-the-ground projects photo monitoring over two years will be \$2,000 in-kind support.

Deliverables

Nutrient and sediment water quality data above, at and below Choteau acquired, entered into DEQ database, analyzed for results. Before and after photos of all on-the-ground projects.

Task 2 Funding

319 Funds	<input type="text" value="\$6,120.00"/>
Non-Federal Match	<input type="text" value="\$4,600.00"/>
Other Federal Funds	<input type="text"/>
Total Cost	<input type="text" value="\$10,720.00"/>
Is Match Secured?	<input type="text" value="Yes"/>

Timeline July 2013 - June 2014

Match Source TRWG

Description

Three landowners will install a riparian project with each site including: 1) off-stream water system with solar pump, 2,000 feet of pipeline and water tank; 2) approximately 1,200 feet of 4-strand riparian fencing; and 3) written grazing management plan agreed upon by landowner, TRWG and DEQ that clearly states expectations, location, monitoring, when, what and where livestock will graze on 500 acres over a 10-year project lifespan. 319 grant funds for 3,600 feet of 4-strand fence at \$5/ft = \$18,000; 3 solar pumps at \$3,000 each = \$9,000; 6,000 feet of plastic pipe and connections from pump to water tank at \$1 foot = \$6,000; 3-500 gallon water tanks at \$2,000 each = \$6,000; \$3,000 TRWG coordinator time at \$25 per hour to oversee riparian projects for a total of \$42,000. In-kind support will be the \$50,000 labor and equipment to install fence and water systems.

Water quality benefits will be estimated by TRWG and landowner calculating reduction of 1) nitrogen and phosphorus loads in lbs/yr and 2) sediment loads in cubic yards into the Teton River.

Although the actual in-kind match from the landowners does not have a secured contract they have assured the TRWG they are planning on moving forward with the projects.

Deliverables

Three completed BMP projects that include 3,600 feet of riparian fencing, three off-stream waters and signed grazing management plans. Also estimated water quality benefits.

Task 3 Funding

319 Funds	\$42,000.00
Non-Federal Match	\$50,000.00
Other Federal Funds	
Total Cost	\$92,000.00
Is Match Secured?	No

Timeline fall 2013 - spring 2014

Match Source Landowners

Task 4 Title **Develop a water quality education program**

Description

TRWG, assisted by Teton County Extension Service will 1) conduct one landowner tour of completed riparian projects to demonstrate to other landowners what will work, 2) produce three newsletters to will reach 3,000 landowners to explain what is and is not working for riparian projects around Montana, 3) conduct five grazing management workshops so landowners can acquire a variety of ideas for riparian management projects, and 4) one annual meeting that will have 75 landowners see pictures of successful riparian projects. The intent of using several different educational tools is to make sure the TRWG reaches most landowners eventually through a media methods that they will best understand.

319 grant funds for 1) one landowner tour for bus holding 40 people at \$700 and project data handouts at \$300 = \$1,000; 2) three newsletters with postage and copies at each \$700 = \$2,100; 3) five workshops for room rental, handouts and speaker travel = \$1,000; 4) one annual meeting for room rental, handouts, and speaker travel = \$1,000; and \$1,300 TRWG coordinator time to help with all training events for a total of \$6,400. In-kind support will be for speakers time, landowner attendance, and financial donations for meals for each training event = \$23,000. Cannot show landowner match secured until project complete.

Deliverables

More informed landowners on how riparian projects can fit their operation through one tour, three newsletters, five workshops, one annual meeting.

Task 4 Funding

319 Funds	\$6,400.00
Non-Federal Match	\$23,000.00
Other Federal Funds	
Total Cost	\$29,400.00
Is Match Secured?	No

Timeline July 2013 - June 2015

Match Source TRWG, Teton CD and landowners

Description

Accounts and invoices in proper order and available for review by contracting officer. Signed billing statements, quarterly progress reports, annual reports and a final project report submitted in a timely way.

Deliverables

A successful 319 grant project that helps improve water quality in the Teton River that documents the effort through complete reports and invoices.

Task 5 Funding

319 Funds	<input type="text" value="\$4,600.00"/>
Non-Federal Match	<input type="text" value="\$5,000.00"/>
Other Federal Funds	<input type="text"/>
Total Cost	<input type="text" value="\$9,600.00"/>
Is Match Secured?	<input type="text" value="Yes"/>

Timeline	<input type="text" value="July 2012- June 2015"/>	Match Source	<input type="text" value="TRWG"/>
----------	---	--------------	-----------------------------------

Task 6 Title

Description

Deliverables

Task 6 Funding

319 Funds	<input type="text"/>
Non-Federal Match	<input type="text"/>
Other Federal Funds	<input type="text"/>
Total Cost	<input type="text"/>
Is Match Secured?	<input type="text"/>

Timeline	<input type="text"/>	Match Source	<input type="text"/>
----------	----------------------	--------------	----------------------

Section V: Supporting Documents

A: Detailed Project Budget

	Cash Match			In-Kind Match				
Task Number and Specific Action	Private	State	Federal	Private	State	Federal	319 Funds	Total Costs
SAP								
Task 1 - MSU help write SAP							\$2,000	\$2,000
Task 1 - Coordinator help write SAP							\$1,000	\$1,000
Task 1 - TRWG board help write SAP				\$3,000				\$3,000
MONITORING								
Task 2 - Monitoring - lab costs							\$2,120	\$2,120
Task 2 - MSU train volunteers							\$2,000	\$2,000
Task 2 - Volunteer monitoring				\$2,600				\$2,600
Task 2 - Taking photo points				\$2,000			\$1,000	\$3,000
Task 2 - Coordinator help volunteers							\$1,000	\$1,000
RIPARIAN PROJECTS/BMPs								
Task 3 - Riparian project materials							\$39,000	\$39,000
Task 3 - Landowners labor to install				\$50,000				\$50,000
Task 3 - Coordinator oversee project							\$3,000	\$3,000
EDUCATION & OUTREACH								
Task 4 - One tour - 40 people				\$6,400			\$1,000	\$7,400
Task 4 - Three newsletters - 3,000 ea				\$2,000			\$2,100	\$4,100
Task 4 - Five workshops - 100 people				\$8,600			\$1,000	\$9,600
Task 4 - Annual meeting - 75 people				\$6,000			\$1,000	\$7,000
Task 4 - Coordinator help all above							\$1,300	\$1,300
Task 5 - Administration at 8%				\$5,000			\$4,600	\$9,600
TOTAL				\$85,600			\$62,120	\$147,720

B: Project Milestone Table: Please complete the following Project Milestone Table by entering task numbers and titles in the left hand column, then check the box(es) for the appropriate quarter(s) and year(s) in which the task will take place.

Milestone	2QT 2013	3QT 2013	4QT 2013	1QT 2014	2QT 2014	3QT 2014	4QT 2014	1QT 2015	2QT 2015	3QT 2015	4QT 2015	1QT 2016
Task 1 - SAP	<input checked="" type="checkbox"/>	<input checked="" type="checkbox"/>	<input type="checkbox"/>	<input type="checkbox"/>	<input type="checkbox"/>	<input type="checkbox"/>	<input type="checkbox"/>	<input type="checkbox"/>	<input type="checkbox"/>	<input type="checkbox"/>	<input type="checkbox"/>	<input type="checkbox"/>
Task 2 - Monitoring	<input type="checkbox"/>	<input checked="" type="checkbox"/>	<input checked="" type="checkbox"/>	<input checked="" type="checkbox"/>	<input checked="" type="checkbox"/>	<input checked="" type="checkbox"/>	<input checked="" type="checkbox"/>	<input checked="" type="checkbox"/>	<input checked="" type="checkbox"/>	<input checked="" type="checkbox"/>	<input type="checkbox"/>	<input type="checkbox"/>
Task 3 - BMPs	<input type="checkbox"/>	<input checked="" type="checkbox"/>	<input checked="" type="checkbox"/>	<input checked="" type="checkbox"/>	<input checked="" type="checkbox"/>	<input checked="" type="checkbox"/>	<input checked="" type="checkbox"/>	<input type="checkbox"/>	<input type="checkbox"/>	<input type="checkbox"/>	<input type="checkbox"/>	<input type="checkbox"/>
Task 4 - Education and outreach	<input checked="" type="checkbox"/>	<input checked="" type="checkbox"/>	<input checked="" type="checkbox"/>	<input checked="" type="checkbox"/>	<input checked="" type="checkbox"/>	<input checked="" type="checkbox"/>	<input checked="" type="checkbox"/>	<input checked="" type="checkbox"/>	<input checked="" type="checkbox"/>	<input checked="" type="checkbox"/>	<input checked="" type="checkbox"/>	<input type="checkbox"/>
Task 5 - Administration	<input checked="" type="checkbox"/>	<input checked="" type="checkbox"/>	<input checked="" type="checkbox"/>	<input checked="" type="checkbox"/>	<input checked="" type="checkbox"/>	<input checked="" type="checkbox"/>	<input checked="" type="checkbox"/>	<input checked="" type="checkbox"/>	<input checked="" type="checkbox"/>	<input checked="" type="checkbox"/>	<input checked="" type="checkbox"/>	<input type="checkbox"/>
	<input type="checkbox"/>	<input type="checkbox"/>	<input type="checkbox"/>	<input type="checkbox"/>	<input type="checkbox"/>	<input type="checkbox"/>	<input type="checkbox"/>	<input type="checkbox"/>	<input type="checkbox"/>	<input type="checkbox"/>	<input type="checkbox"/>	<input type="checkbox"/>
	<input type="checkbox"/>	<input type="checkbox"/>	<input type="checkbox"/>	<input type="checkbox"/>	<input type="checkbox"/>	<input type="checkbox"/>	<input type="checkbox"/>	<input type="checkbox"/>	<input type="checkbox"/>	<input type="checkbox"/>	<input type="checkbox"/>	<input type="checkbox"/>
	<input type="checkbox"/>	<input type="checkbox"/>	<input type="checkbox"/>	<input type="checkbox"/>	<input type="checkbox"/>	<input type="checkbox"/>	<input type="checkbox"/>	<input type="checkbox"/>	<input type="checkbox"/>	<input type="checkbox"/>	<input type="checkbox"/>	<input type="checkbox"/>
	<input type="checkbox"/>	<input type="checkbox"/>	<input type="checkbox"/>	<input type="checkbox"/>	<input type="checkbox"/>	<input type="checkbox"/>	<input type="checkbox"/>	<input type="checkbox"/>	<input type="checkbox"/>	<input type="checkbox"/>	<input type="checkbox"/>	<input type="checkbox"/>
	<input type="checkbox"/>	<input type="checkbox"/>	<input type="checkbox"/>	<input type="checkbox"/>	<input type="checkbox"/>	<input type="checkbox"/>	<input type="checkbox"/>	<input type="checkbox"/>	<input type="checkbox"/>	<input type="checkbox"/>	<input type="checkbox"/>	<input type="checkbox"/>
	<input type="checkbox"/>	<input type="checkbox"/>	<input type="checkbox"/>	<input type="checkbox"/>	<input type="checkbox"/>	<input type="checkbox"/>	<input type="checkbox"/>	<input type="checkbox"/>	<input type="checkbox"/>	<input type="checkbox"/>	<input type="checkbox"/>	<input type="checkbox"/>
	<input type="checkbox"/>	<input type="checkbox"/>	<input type="checkbox"/>	<input type="checkbox"/>	<input type="checkbox"/>	<input type="checkbox"/>	<input type="checkbox"/>	<input type="checkbox"/>	<input type="checkbox"/>	<input type="checkbox"/>	<input type="checkbox"/>	<input type="checkbox"/>

Please ensure that you submit a project map(s) and letters of support along with this Final Application form. If design drawings are available please provide those as well. For on-the-ground work please include copies of the applicable permits.

☒ **C: Project Map**

☒ **D: Letters of Support**

☐ **E: Design Drawings**

☐ **F: Applicable Permits**

G: Comments: Please use the space provided for any additional information that may not have been captured by this application form.

The TRWG over the past 20 years with help from partners has identified specific locations that are impaired and needing remediation to improve water quality in the Teton River and its tributaries. Over that same 20 years the TRWG and partners have incrementally implemented projects that are improving the health of the Teton River. The TRWG is within a few years where remaining water quality improvements will be at the hands of Mother Nature. So please give this proposal favorable consideration so the TRWG can soon put most water quality issues to rest.

Remaining projects will be on Willow Creek and Muddy Creek drainages when sufficient landowner support and water both exist at the same time so there can be clear direction on what should be done.

The TRWG is requesting a \$2,000 advance so small bills such as postage, copies and supplies can be bought to fulfill these needs as they arise.

Map #1 shows Teton Watershed

Map #2 shows project locations within a smaller area

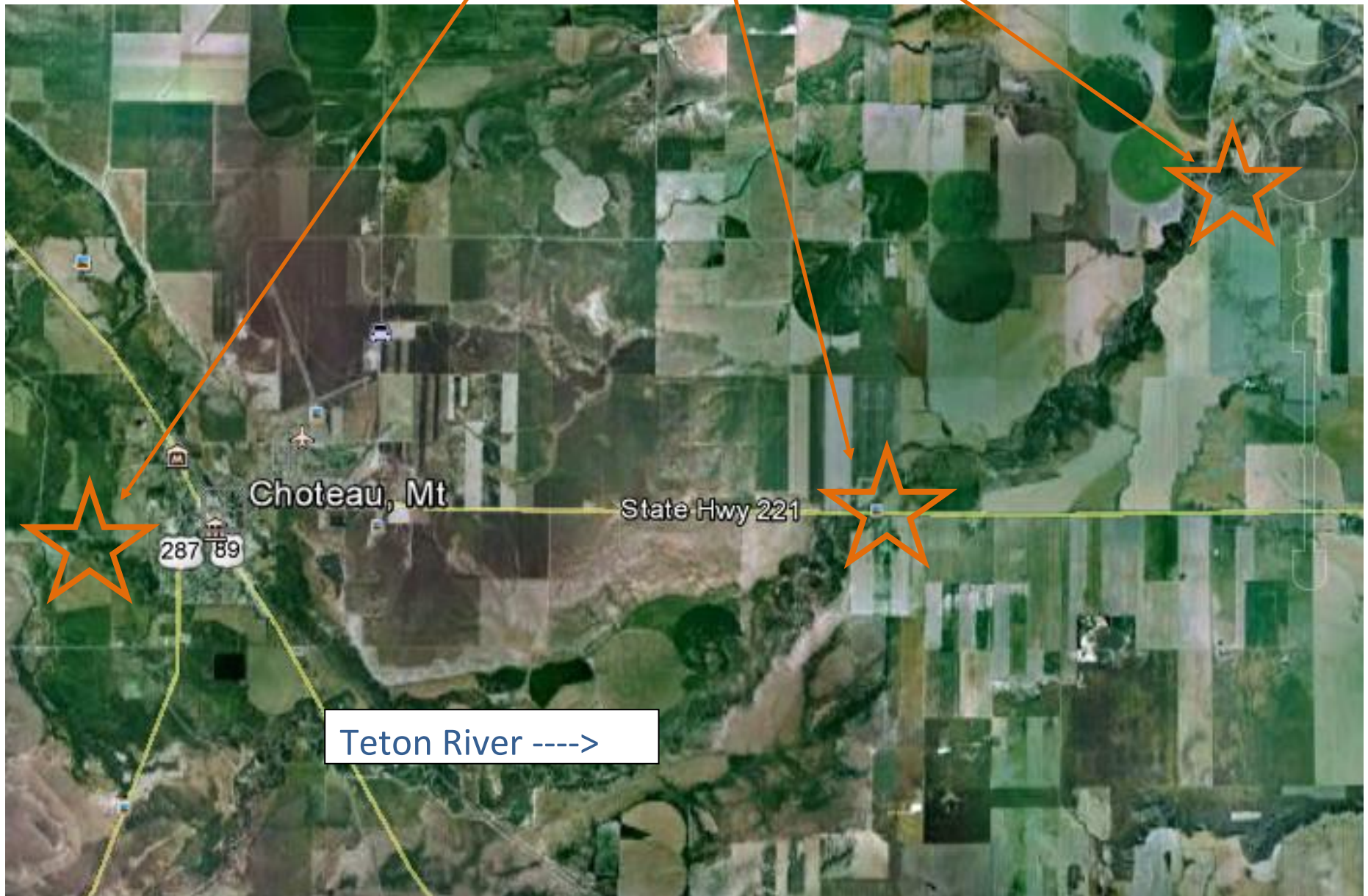
Teton River Watershed

1.2 million acres



General project locations reach for the 2013 TRWG 319 grant application

Specific Projects Locations



Letters of Support and Commitment

Montana State University Extension Service



September 28th, 2012

Robert Ray, Manager
Watershed Protection Services
Water Quality Planning Bureau
Montana Department of Environmental Quality
P.O. Box 200901
Helena, MT 59620-0901

Dear Mr. Ray,

This letter is written in support of the Teton River Watershed Group (TRWG) 319 proposal 'Upper Teton Watershed – Riparian Improvements.' MSU Extension Water Quality (MSUEWQ) has been working with the TRWG on development of a quality assurance project plan (QAPP) which is an articulation of watershed goals to guide future monitoring. The group is gaining momentum in the arena of citizen based monitoring and has recognized the potential of this type of data collection effort for reaching out to stakeholders.

With the upcoming completion of the TRWG QAPP, the TRWG is well poised to collect data to assess trends in water quality conditions that will be a valuable educational tool for reaching out to additional stakeholders. We hope that you will give this proposal full consideration for funding.

Sincerely,

W. Adam Sigler
Montana State University
Extension Water Quality Associate Specialist
Phone: (406) 994-7381
Email: asigler@montana.edu
Website: <http://waterquality.montana.edu/>

Land Resources and Environmental Sciences

334 Leon Johnson Hall
P.O. Box 173120
Bozeman, MT 59717-3120

Tel (406) 994-7060
Fax (406) 994-3933
landresources.montana.edu

Teton Conservation District

319 Grant Review Committee:

The Teton Conservation District has not held a meeting in the past three months due to the lack of a quorum so we have not officially taken a vote on supporting the Teton River Watershed Group's Upper Teton Riparian Improvements 319-grant proposal. We hope to hold a meeting on Monday, October 1st at 6:00 PM at which time we will get a letter of support and commitment to you for the project.

Vicki Baker, Chair
Teton Conservation District

New Rockport Colony

Meeting with colony leader, Eli stated yes they would like to work with the TRWG on this project.

Rick Corey

To Whom It May Concern :

I, Rick Corey of Choteau, would like to support the Teton Watershed riparian project. I hope to be able to install a project on my place.

Rick Corey